

TABLE OF CONTENTS

DISTRICT NEWS

** Planting Together ** - please share in your bulletin and/or newsletter

- 1+. Education, Youth, and Family Life (Sr Youth Event)—Rhonda Mohr
- 2+. Business Manager News (Budget Receipts / Pre-Retirement Workshop)—Roger Curtis
- 3. LCEF Investment Interest Rates—Carole White
- 4+. IOWAY: LERT Training / IOWAY Banquet—Ellie Menz
- 5+. Mission Central (Events at Mission Central)—Gary Thies & Rev. Brent Smith
- 6. Amigos en Cristo—Rev. Dan Vogel
- 7. Hispanic Outreach in Siouxland—Rev. Henry Witte
- 8. The Lamplighter—Rev. Russell Senstad

AROUND THE DISTRICT

MINISTRY PARTNERS

Camp Okoboji + Creation Museum and Ark Encounter Bus Trip
Lutheran Family Service

ALSO INCLUDED...

Concordia Seminary, St. Louis Admissions Director in IDW (Laudamus Choir Tour)
Lutherans For Life of Iowa Fall Conference
Lutherans For Life 2020 Iowa Essay Contest
Operation Barnabas—Rev. Dr. Keith Schweitzer
Operation Barnabas Conference
Reaching Rural America for Christ Newsletter



CALL ACCEPTED

Rev. Jeffrey Siegel, Candidate, Des Moines, to St. Luke, San Jose/Christ, Delaban, IL.

CALLS RECEIVED

Rev. Byrene (Keith) Haney, Congregational Services Executive, Northern Illinois District, to Assistant to the President for Missions, Stewardship, and Human Care, Iowa District West.

Rev. Kendall Meyer, St. John, Quincy, IL, to St. Paul, Fort Dodge.

Rev. Thomas Vanderbilt, Messiah, Holt, MI, to Mt. Calvary, Indianola.

CALLS DECLINED

Rev. Andrew Audette, The Remedy, Oakdale, MN, to Shepherd of the Valley, West Des Moines.

Rev. Timothy Chase, Dodge Center, MN, to Concordia, Lake Park, IA/Trinity, Lakefield, MN.

Rev. James Stogdill, Messiah, Johnston, to Grace, Stockton/Messiah, La Crescent, MN.

TRANSFERRED IN

Rev. Daniel Mapur, Candidate, from North Dakota District, June 15, 2019.

Rev. David Strable, Candidate, from Indiana District, July 7, 2019.

COMMISSIONED MINISTER—CALL RECEIVED

Alex Irwin, Mt. Calvary, Indianola, to Concordia, Louisville, KY.

Calendar of Events

September 2...Labor Day, District Office Closed

September 9-10...District Pastors Conference, Fort Dodge

September 10...Circuit Visitors Meeting, District Office, Fort Dodge

September 14...Parish Nurse Conference, District Office, Fort Dodge

September 21...LWML Fall Retreat, Mission Central-Mapleton

September 28...Lutherans For Life of Iowa Fall Conference, Cedar Rapids

Follow Iowa District West on these social media websites.



[www.facebook.com/
iowaDistrictWest](http://www.facebook.com/iowaDistrictWest)



[www.twitter.com/
iowaWest](http://www.twitter.com/iowaWest)



[www.youtube.com/user/
iowaDistrictWest](http://www.youtube.com/user/iowaDistrictWest)

Iowa District West, LCMS
409 Kenyon Road, Suite B
Fort Dodge, IA 50501

515.576.7666
sue@iowadistrictwest.org
www.idwlcms.org

Please note: The inclusion of items from outside sources in *The Messenger* is for information purposes only. Inclusion of such items does not constitute District endorsement.



Planting Together

September 2019

409 Kenyon Road, Suite B — Fort Dodge, Iowa 50501
515-576-7666 Fax 515-576-2323 www.idwlcms.org
Contact email: sue@iowadistrictwest.org

On a Mission to Support Christ's Mission!

New Normal



When I work with disasters, I often hear that individuals are trying to find their new normal. After the loss, chaos, and numerous decisions, a new normal eventually does emerge. The new normal may mean moving to a new location, living in a motel or with other family members for months or years. The financial costs and physical challenges are often more than a family can handle. That's where those of us who were not affected by the disaster, jump in and lend a helping hand

and/or financial assistance.

For the Iowa flooding, God's people in Iowa District West have donated \$75,000 for the purchase of building supplies and thousands and thousands of people/hours. Food, clothing and supplies have been donated, meals prepared, and 13 LERT teams responded to help meet some of the needs in Pacific Junction and Hamburg.

There are so many needs! We can not help everyone; but everyone can help someone. In working with Pastor Seth Kaiser, Trinity Lutheran Church, Glenwood, Iowa, we are currently focusing on helping two families in Pacific Junction with the rebuilding of their homes. Check out the IOWAY Facebook posts on the progress by the recent LERT teams. For additional information on our outreach, check out the upcoming September and October Lutheran Witness articles at www.idwlcms.org

Will you or your congregation consider adopting/sponsoring a family? Please contact me for additional information. God's Blessings!

Ellie Menz, IOWAY Director
Ellie@iowadistrictwest.org

Operation Barnabas Conference

Iowa District West Operation Barnabas will host their 7th annual conference on Saturday, October 12, 2019, 9 a.m. to 3 p.m., at St. Paul Lutheran Church, Carroll. Speakers will share a variety of ways you and your congregation can help veterans and our current military. Learn more of the future of Operation Barnabas. Watch for more information coming to your church soon!



LERT (Lutheran Early Response Team) Training

When: **Saturday, November 2, 2019**

Where: Trinity Lutheran Church, 641 3rd Avenue, Manilla, IA
Facilitator: Ellie Menz, IDW Disaster Response Coordinator

Registration begins at 8 am (light breakfast & lunch will be served)

Register online at <https://form.jotform.com/81215292634959> (enter training code 0034) or contact Jill Davis at the IDW office: 515-576-7666. Please register by October 28.

Register for the 2019 Junior and Senior High Youth Gatherings

Junior Youth — "Come to the Table" — October 19-20
Senior Youth — "Foundations Prepared" — November 15-17

Concordia Seminary and Taste of the Sem

Is there a young man in your high school youth group who has gifts that would be well served in pastoral ministry? Do you have a high school student who has expressed an interest in the pastoral ministry? If so, please consider encouraging him to check out Concordia Seminary's "Taste of the Sem," being held February 15-17, 2020. During this on-campus event, young men considering the ministry will be connected with a current seminary student to see what life is like at Concordia Seminary, St. Louis. To register or to get more information, please check the Concordia Seminary website at <https://www.csl.edu/admissions/visit/taste-of-the-sem/>. If you would like more information, please contact Rev. Dr. Scott Holder in the Admissions Office at 314-505-7225.

Calendar of Events

September 2...Labor Day, District Office Closed
September 9-10...District Pastors Conference, Fort Dodge
September 10...Circuit Visitors Meeting, Fort Dodge
September 14...Parish Nurse Conference, District Office, Fort Dodge
September 21...LWML Fall Retreat, Mission Central
September 28...Lutherans For Life of Iowa Fall Conference, Cedar Rapids

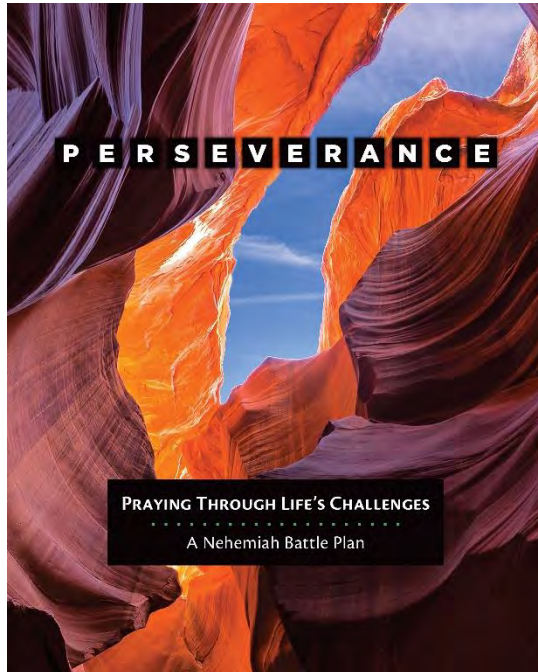
For more information on Iowa District West activities,
view *The Messenger* at www.idwlcms.org/publications.php

Education Youth Family Life

Rhonda J. Mohr Assistant to the President 515-573-0010



New CPH Bible Study Resource



Written by Donna Pyle

We all have it: That one thing that's keeping each of us from a fuller life. It could be a habit to break, a goal to accomplish, or a lingering project to complete.

What if we, like Nehemiah, persevered with single-minded focus and trusted God to accomplish something incredible? Nehemiah may not be the first biblical example who comes to mind when we talk about perseverance, but we look to his example to discern helpful steps that we can apply on our one-thing journey. God, through the life of Nehemiah, provides insight into how we can respond to struggles - the one thing - in our life.

Are you tired of being defeated by your one thing? Perhaps it's time to do something about it.

Through this eight-lesson journey, we walk with Nehemiah from Persia to Jerusalem as God gives him the strength to persevere past seemingly insurmountable obstacles into His redeeming grace. Each session includes a video segment that digs deeper into Scripture and explores life application. For individual and group use.

Sunday School Teacher Encouragement and Equipping

*Resources for
teaching*

Encouraged with the Word of God

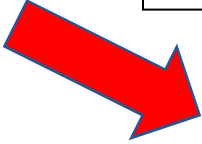
*Classroom
Management*

Best Practices



Contact Rhonda at the district office if you'd like to schedule an hour workshop to inspire your SS teachers.

Iowa District West Junior Youth and Senior Youth Gatherings




All congregations should have received registration packets for the Junior Youth Gathering and the Senior Youth Gathering. Registration materials are also available on the District Website under Youth Ministry.

Click the Junior Youth tab or the Senior Youth tab on the link below and you will find the registration information. We hope to see your youth group at the gathering.



<http://idwlcms.org/youth-ministry.php>



Strengthening Marriage Workshops are being planned for November in Fort Dodge and for February in Spencer. More details will be in the October Messenger. Begin thinking now how you might promote it in your congregation. If your congregation is willing to host a Strengthening Marriage Workshop, the Iowa District West Education and Family Life Committee will work with you to plan the event.



SR YOUTH EVENT

Three dynamic sessions

- Mormonism Exposed
- Gospel according to Carrie Underwood
- Lord's Supper as Pure Gift

Schedule:

9:30-10am Arrive

10am Opening Devotion

10:15am Session 1

11:00am Break

11:15am Session 2

12:00pm Lunch/Other Stuff

1:00pm Session 3

1:45pm Wrap Up

2:00pm Depart



Saturday, September 21
10am -2pm

RSVP

number of youth
to the
district office
515-576-7666

Our Savior Lutheran Church
500 N. 24th St. Denison, Iowa

Service Project: Each youth group is asked to bring a box of non-expired, non-perishables to give to the local food pantry in Denison



Sponsored by the Youth Service Committee

BUSINESS MANAGER NEWS
Iowa District West Congregations' Mission Receipts



For the Month Ending July 2019	
Anticipated Amount	\$117,200
Actual Receipts	\$133,903
Fiscal Year-to-Date Receipts	
Anticipated Amount	\$703,200
Actual Receipts	\$690,205
Over (under) anticipated amount	\$(12,995)
Use of Mission Receipts	
Remitted to Synod (45%)	\$316,440
Balance for District programs/operations	\$373,765
Total Receipts	\$690,205
Mission Receipts Compared With Last Year	
Month ending July 2019	\$690,205
Month ending July 2018	\$733,043
Over (under) last year	\$(42,838)

Stewardship Corner - by Ron Chewning - www.StewardshipAdvisors.org – 248.644.6150

**IN SPITE OF OUR UNWORTHINESS,
 GOD HAS CHOSEN US IN CHRIST TO
 BECOME HIS STEWARDS.**

“You did not choose Me, but I chose you
 and appointed you that you should go and
 bear fruit and that your fruit should abide...”
 (John 15:16).



In 1 Timothy 6:7 we read, “*We brought nothing into the world, and we cannot take anything out of the world.*” Billy Graham said, “You never saw a hearse going to cemetery pulling a U-Haul.” We are not going to take anything with us. The money and things that God entrusts to us while on earth are tools that can be used for good or evil. They can build or destroy. While on earth, we are in control of what God has entrusted to us, and it is up to us to do things either God’s way or the world’s way. The decision is ours. May God help us understand that He owns all things and that we are the stewards to faithfully and wisely manage all that He entrusts to us.

Stewardship Spark / Monthly Mission Moment

Did you know that your congregational mission dollars support the District budget in a variety of missions, programs, projects, and activities? This month the education ministry is highlighted. The education budget for 2019 is \$130,300 (5% of the budget) plus support from the Koepke Endowment. Rhonda Mohr can answer all your questions in the areas of education, early childhood, day school, family life, and more! To learn more about education areas in the District go to www.idwlcms.org/elementary-education.php or www.idwlcms.org/early-childhood-education.php.

Congregational Quarterly Financial Report



Included in *The Messenger* is the report for congregational support for the second quarter (February 1 - July 31, 2019) of the first six months of the District's fiscal period. Review your church's mission pledge to make sure your budget receipts are up to date. This report includes only District/Synod receipts and no restricted missionary support or other program income. Your mission dollars enable us to be "On a Mission to Support Christ's Mission!"

Church & Clergy Finance/Treasurer's Workshop

Mark your calendar to attend the upcoming workshop this fall on **Saturday, November 2** at **Camp Okoboji** from 9 am to 3 pm. Pastors and any individuals within the church having financial responsibilities should attend.

The guest speaker will be Karen Sansone CPA. She is the LCMS Tax and Compliance Director and brings a wealth of knowledge and expertise.

Thanks to Carole White and Lutheran Church Extension Fund for providing lunch. Entire program expenses are paid by funds from the District's insurance provider (American Church Group & Brotherhood Mutual Insurance Company). Any questions, contact Roger Curtis at the District office (515.576.7666 or Roger@IowaDistrictWest.org). The brochure/registration form is available online.



October is Clergy Appreciation Month



Clergy Appreciation Month is a special time when congregations honor their pastor(s) and his family for their hard work and sacrificial dedication. You might consider a special service of affirmation, a potluck event, or planting a tree in their honor. The sky's the limit! It is usually scheduled in October, but can be held at any time that is convenient for the church. Brainstorm ideas now so you can celebrate later this fall. For additional ideas, download details from Focus on the Family's Clergy Appreciation Month Planning Guide

(http://media.focusonthefamily.com/pastoral/pdf/CAM_Guide_2012.pdf)

The National Association of Evangelicals (NAE) recently designed a website to show and share God's love for their pastors. Most simply, it's an appeal from the heart to show your pastor you care by sharing your talent, your time, your friendship, and your material blessings with them. What can you do to support your pastor?

Compensation & Benefit Recommendations

When projecting salaries next year for professional church workers, remember to review the District Compensation Recommendations 2019-2021 that were approved at the last District Convention. They are online under the stewardship link (www.idwlcms.org/stewardship.php) and click on the Compensation tab.



As another option, under "Links of interest," check out the Synod's tool called the Concordia Plan Services Compensation tool for pastors and education staff. It will provide a range rather than a specific number.

Concordia Plan Services

The deadline for submitting the 2020 Concordia Health Plan Election Form (and Personal Spending Account selection) is September 6 (effective on January 1, 2020). The average rate increase is 6.7% for all health plan options and the rates are remaining the same for the retirement and disability plans. The annual open enrollment for workers and their dependents is from October 28-November 15, 2019. The CPS employer resource team led by Sally Malinee (314.885.6829) and the District Business Manager Roger Curtis (515.576.7666) are available to answer your questions.

Vault Advisor Program - Get Student Debt Under Control

The weight of student debt can be heavy. Thankfully, you now have help. Concordia Plan Services is introducing a free new benefit: Vault, a leading provider of student loan repayment services; see intro video webinar at <https://youtu.be/8uHGgRXNHGQ>. With the Vault Advisor program, you can:

- Explore opportunities to refinance your student debt
- Review 70+ options to speed up repayment
- Seek one-on-one advice with a student loan expert

Learn about navigating federal repayment programs. For more information, contact Financial Wellness Coordinator, Laura Scheer at 314.885.6869 or Laura.Scheer@ConcordiaPlans.org or email genius@vault.co.

Pre-Retirement Workshop sponsored by Concordia Plan Services and Iowa District West

Pastors and Church Workers and spouses – Are you over 50 and plan to retire someday? Now is the time to think about your future so you are ready when the time comes.

Plan now to attend a pre-retirement workshop on November 8-9 (Friday 7-9 pm and Saturday 9 am-3 pm) in Ames. The program will focus on: Basic Finances and Budgeting; Retirement Income; Health Care and Costs; Envisioning Retirement Life; Taking Care of Your Loved Ones; and Time for Q & A. The program speaker will be Paul Snyder, Retirement & Benefit Educator for CPS. Paul has over 35 years of experience with the Plans and has a wealth of knowledge to assist you with your retirement planning. See the poster for more information.



Now is the Time to Start Background Screenings

With fall right around the corner and (Sunday) school starting soon, many churches will be seeking volunteers to assist with the children and youth programs. Background checks are a great way to protect the church and volunteers. They serve as a deterrent to sexual predators and reveal convictions of everyone's past. It is important to exercise complete due diligence in protecting the congregation and children. An effective tool is to utilize the background screening services found online at <http://ProtectMyMinistry.com/lcms>. Another new option from the Synod is called AAIME (www.aaimea.org). For more information, contact Julie.Kappen@aaimea.org or call 314.754.0201.

The chart below indicates that child sexual abuse is a common theme for lawsuits. Be sure your congregation is taking steps to protect your congregation.

Top 5 Reasons Churches End Up in Court

	2014	2015	2016	2017	2018
Reason #1	Sexual Abuse of a Minor	Sexual Abuse of a Minor	Property Disputes	Sexual Abuse of a Minor	Sexual Abuse of a Minor
Reason #2	Personal Injury	Property Disputes	Sexual Abuse of a Minor	Property Disputes	Zoning
Reason #3	Property Disputes	Personal Injury	Personal Injury	Personal Injury	Personal Injury
Reason #4	Insurance Coverage Disputes	Zoning	Insurance Coverage Disputes	Zoning	Property Disputes
Reason #5	Affordable Care Act	Insurance Coverage Disputes	Zoning	Insurance Coverage Disputes	Clergy Removal

Congregation Mission Support - Unrestricted Budget Receipts

February 1, 2019 – July 31, 2019

Circuit	Congregation	Town	Communicants	Pledge	Actual Amount	Per Comm.
ADAIR	HOLY CROSS	ANITA	136	0.00	0.00	0.00
	ZION	ATLANTIC	538	20,400.00	10,200.00	18.96
	ST JOHN	CASEY	123	200.00	0.00	0.00
	ZION	DEXTER	186	200.00	200.00	1.08
	IMMANUEL	GREENFIELD	118	5,040.00	1,275.00	10.81
	IMMANUEL	GUTHRIE CENTER	200	5,000.00	2,500.00	12.50
	ST. THOMAS	PANORA	110	0.00	0.00	0.00
	FAITH	WINTERSET	37	600.00	450.00	31.97
	FIRST	WIOTA	96	1,500.00	1,182.80	4.69
	Total			32,940.00	15,807.82	
ALGONA	TRINITY	ALGONA	955	62,000.00	30,195.00	31.62
	ZION	AYRSHIRE	30	5,000.00	0.00	0.00
	ST JOHN	BURT	244	4,500.00	2,943.00	12.06
	ST LUKE	CYLINDER	134	4,500.00	1,334.00	9.96
	ST PAUL	EMMETSBURG	270	16,000.00	6,666.65	24.69
	ST JOHN	FENTON	130	7,200.00	1,800.00	13.85
	ST JOHN	GARNER	177	6,000.00	3,000.00	16.95
	ST PAUL	GARNER	366	24,000.00	12,000.00	32.79
	IMMANUEL	LIVERMORE	69	5,000.00	2,525.00	36.59
	IMMANUEL	LONE ROCK	115	12,620.00	2,665.00	23.09
	ZION	LIVERNE	91	5,000.00	0.00	0.00
	TRINITY	MALLARD	154	28,600.00	14,400.00	93.51
	OUR SAVIOR	SWEA CITY	36	0.00	600.00	16.67
	PEACE	WEST BEND	134	16,500.00	5,480.00	40.90
	ST PAUL	WHITTEMORE	145	4,800.00	450.00	3.10
	Total			201,720.00	84,048.65	
BOONE	MEMORIAL	AMES	641	49,250.00	24,600.00	38.38
	ST PAUL	AMES	378	32,000.00	15,900.00	42.30
	ST. PAUL	BOONE	160	5,000.00	3,753.00	23.46
	TRINITY	BOONE	570	5,000.00	1,582.00	2.78
	CHRIST	BOUTON	226	20,000.00	9,999.46	44.25
	TRINITY	DAYTON	21	750.00	500.00	23.81
	TRINITY	JEFFERSON	341	10,000.00	5,000.00	14.66
	ZION	OGDEN	296	10,000.00	3,318.00	11.21
	TRINITY	PERRY	80	0.00	0.00	0.00
	Total			132,000.00	64,742.46	
CARROLL	ZION	ARCADIA	405	6,000.00	2,500.00	6.17
	ST. JOHN	AUDUBON	166	1,200.00	700.00	4.22
	ST PAUL	CARROLL	384	25,500.00	10,986.90	28.61
	TRINITY	COON RAPIDS	69	1,000.00	750.00	10.87
	PEACE	GLIDDEN	104	4,500.00	1,770.70	17.03
	IMMANUEL	LIDDERDALE	60	3,000.00	3,170.40	52.84
	TRINITY	MANILLA	159	0.00	0.00	0.00
	ZION	MANNING	539	8,000.00	4,000.00	7.42
	Total			49,200.00	23,878.00	
CHEROKEE	ST. PAUL	AURELIA	293	34,000.00	13,831.40	47.21
	TRINITY	CHEROKEE	399	15,000.00	8,750.00	21.93
	PEACE	MARCUS	240	8,000.00	7,252.28	30.22
	TRINITY	MARCUS	113	6,000.00	4,500.00	39.82
	ST JOHN	PAULLINA	275	1,000.00	1,000.00	3.64
	ZION	PAULLINA	537	3,000.00	1,952.50	3.64
	PILGRIM	QUIMBY	94	2,000.00	1,000.00	10.64
	BETHEL	SUTHERLAND	234	13,000.00	4,541.00	19.41
	Total			82,000.00	42,827.18	



Circuit	Congregation	Town	Communicants	Pledge	Actual Amount	Per Comm.
COUNCIL BLUFFS	FAITH	COUNCIL BLUFFS	270	1,000.00	33.00	0.12
	ST. PAUL	COUNCIL BLUFFS	579	17,000.00	8,482.98	14.65
	TIMOTHY	COUNCIL BLUFFS	376	21,604.00	11,171.92	29.71
	TRINITY	GLENWOOD	366	9,000.00	4,500.00	12.30
	PEACE	HARLAN	20	500.00	0.00	0.00
	ST JOHN	HASTINGS	64	4,400.00	900.00	14.06
	ST. JOHN	HONEY CREEK	233	15,000.00	7,500.00	32.19
	IMMANUEL	LOGAN	115	5,000.00	3,000.00	26.09
	FIRST	MISSOURI VALLEY	302	13,680.00	7,980.00	26.42
	ST. PAUL	OAKLAND	64	1,200.00	600.00	9.38
	TRINITY	PERSIA	46	1,500.00	675.00	14.67
	OUR SAVIOR	WALNUT	44	2,000.00	1,000.00	22.73
	Total			91,844.00	45,842.90	
DENISON	FAITH	DELOIT	50	500.00	0.00	0.00
	AMIGOS EN CRISTO	DENISON	22	1,000.00	500.00	22.73
	OUR SAVIOR	DENISON	772	20,000.00	11,666.69	15.11
	ZION	DENISON	1461	0.00	0.00	0.00
	BETHLEHEM	DOW CITY	215	4,750.00	1,735.00	8.07
	ST JOHN	KIRON	105	5,000.00	3,750.00	35.71
	IMMANUEL	SCHLESWIG	510	17,625.00	8,812.50	17.28
	Total			48,875.00	26,464.19	
DES MOINES EAST	CHRIST THE KING	ALTOONA	108	6,600.00	2,940.87	27.23
	ST PAUL	ANKENY	647	6,000.00	3,834.00	5.93
	THE GATE	ANKENY	44	1,000.00	845.00	19.20
	HOLY CROSS	CARLISLE	121	2,500.00	1,249.98	10.33
	CALVARY	DES MOINES	27	1,800.00	900.00	33.33
	HOPE	DES MOINES	431	10,000.00	5,833.00	13.53
	OUR SAVIOUR	DES MOINES	120	2,640.00	1,320.00	11.00
	PEACE	DES MOINES	321	6,300.00	3,275.00	10.20
	MT CALVARY	INDIANOLA	401	13,000.00	6,500.00	16.21
	Total			44,771.00	26,697.85	
DES MOINES WEST	FAITH	ADEL	449	2,000.00	2,000.00	4.45
	LIVING FAITH	CLIVE	180	0.00	0.00	0.00
	ASIAN	DES MOINES	10	0.00	0.00	0.00
	MT OLIVE	DES MOINES	330	1,500.00	750.00	2.27
	SUDANESE	DES MOINES	25	0.00	0.00	0.00
	TRINITY	DES MOINES	170	9,500.00	6,320.00	37.18
	MESSIAH	JOHNSTON	79	0.00	250.00	3.16
	CHRIST OUR SAVIOR	NORWALK	35	900.00	600.00	17.14
	BEAUTIFUL SAVIOR	POLK CITY	443	6,240.00	1,515.00	3.42
	GLORIA DEI	URBANDALE	2300	66,000.00	34,000.00	14.78
	TRINITY	VAN METER	150	7,500.00	225.00	1.50
	SHEPHERD OF THE VALLEY	WDM	511	5,000.00	2,499.98	4.89
	Total			98,640.00	48,159.98	
FORT DODGE	MT CALVARY	EAGLE GROVE	67	2,300.00	150.00	2.24
	HOLY TRINITY	FARNHAMVILLE	222	9,000.00	0.00	0.00
	GOOD SHEPHERD	FORT DODGE	536	20,000.00	9,999.60	18.66
	PRINCE OF PEACE	FORT DODGE	195	4,200.00	3,953.70	20.28
	ST PAUL	FORT DODGE	1160	13,200.00	6,600.00	5.69
	TRINITY	FORT DODGE	58	4,500.00	1,618.50	27.91
	ZION	HUMBOLDT	865	25,000.00	12,500.00	14.45
	TRINITY	KNIERIM	111	3,000.00	2,250.00	20.27
	IMMANUEL	POMEROY	81	6,000.00	3,000.00	37.04
	IMMANUEL	ROCKWELL CITY	205	5,000.00	2,083.35	10.16
	IMMANUEL	ROWAN	51	0.00	0.00	0.00
	ST PAUL	WEBSTER CITY	285	6,000.00	3,000.00	10.53
	Total			98,200.00	45,155.15	
LE MARS	TRINITY	HAWARDEN	391	18,120.00	6,490.25	16.60
	TRINITY	HINTON	284	4,300.00	2,611.00	9.19
	ST JOHN	IRETON	24	7,000.00	4,083.00	170.13
	ST PAUL	IRETON	380	9,000.00	4,500.00	11.84
	FIRST	KINGSLEY	384	7,500.00	2,326.00	6.06
	GRACE	LEMARS	544	10,000.00	4,999.98	9.19
	FAITH	ORANGE CITY	296	20,000.00	10,000.00	33.78
	CHRIST	REMSEN	190	4,500.00	1,812.00	9.54
	Total			80,420.00	36,882.71	

Circuit	Congregation	Town	Communicants	Pledge	Actual Amount	Per Comm.
MAPLETON	TRINITY	ANTHON	95	400.00	110.00	1.16
	ST JOHN	BATTLE CREEK	134	500.00	532.00	3.97
	ST PAUL	BATTLE CREEK	80	800.00	591.28	7.39
	IMMANUEL	CHARTER OAK	54	2,500.00	320.00	5.93
	ST JOHN	CHARTER OAK	422	9,400.00	5,400.00	12.80
	ST PAUL	CHARTER OAK	77	7,300.00	2,522.00	32.75
	GRACE	CORRECTIONVILLE	54	500.00	362.30	6.71
	ST PAUL	IDA GROVE	792	14,400.00	8,314.00	10.50
	ST MATTHEW	MAPLETON	401	2,000.00	1,000.00	2.49
	ST PAUL	UTE	271	11,000.00	5,398.00	19.92
	Total			48,800.00	24,549.98	
SAC CITY	ZION	AUBURN	52	1,500.00	790.00	15.19
	FAITH	EARLY	54	4,000.00	2,084.00	38.59
	FIRST	FONDA	22	400.00	200.00	9.09
	PILGRIM	LAKE CITY	231	6,300.00	3,100.00	13.42
	EMMANUEL	LAKE VIEW	357	15,000.00	7,500.00	21.01
	TRINITY	ODEBOLT	222	14,500.00	7,433.00	33.48
	ST PAUL	SAC CITY	450	15,500.00	3,900.00	8.67
	ST PETER	SAC CITY	36	2,000.00	0.00	0.00
	ST PAUL	SCHALLER	207	15,200.00	6,334.00	30.60
	PEACE	WALL LAKE	425	14,000.00	2,916.70	6.86
	Total			91,400.00	34,257.70	
SIOUX CITY	ST JOHN	CLIMBING HILL	55	3,300.00	0.00	0.00
	BETHEL	LAWTON	217	8,000.00	4,666.00	21.50
	SHEPHERD OF PEACE	SGT BLUFF	116	1,200.00	0.00	0.00
	BETHANY	SIOUX CITY	61	1,200.00	600.00	9.84
	CALVARY	SIOUX CITY	623	18,700.00	11,313.30	18.16
	CONCORDIA	SIOUX CITY	71	1,000.00	285.00	4.01
	FAITH	SIOUX CITY	262	500.00	0.00	0.00
	REDEEMER	SIOUX CITY	1170	55,000.00	32,083.31	27.42
	ST PAUL	SIOUX CITY	716	18,000.00	0.00	0.00
	Total			106,900.00	48,947.61	
SOUTHWEST	ST TIMOTHY	BEDFORD	10	0.00	0.00	0.00
	IMMANUEL	CLARINDA	231	0.00	0.00	0.00
	ST JOHN	CLARINDA	554	7,270.00	3,630.00	6.55
	ST PAUL	CLARINDA	227	3,000.00	750.00	3.30
	REDEEMER	CORNING	123	3,000.00	1,000.00	8.13
	TRINITY	CRESTON	239	6,600.00	3,960.00	16.57
	OUR SAVIOR	LEON	53	500.00	350.00	6.60
	IMMANUEL	OSCEOLA	114	2,200.00	1,138.34	9.99
	TRINITY	SHENANDOAH	119	6,000.00	3,021.50	25.39
	MT CALVARY	VILLISCA	104	0.00	2,800.00	26.92
	Total			28,570.00	16,649.84	
SPENCER	IMMANUEL	ESTHERVILLE	272	4,500.00	2,096.00	7.71
	ST PAUL	HARTLEY	341	32,000.00	14,910.00	43.72
	CONCORDIA	LAKE PARK	140	2,040.00	850.00	6.07
	ENGLISH	LARCHWOOD	44	5,520.00	2,550.00	57.95
	ST JOHN	MAY CITY	113	6,000.00	3,000.00	26.55
	ST PETER	OCHEYEDAN	133	9,000.00	4,500.00	33.83
	ZION	OCHEYEDAN	73	6,000.00	2,730.00	37.40
	PEACE	ROCK RAPIDS	249	5,000.00	2,916.69	11.71
	ST JOHN	SANBORN	188	8,500.00	4,254.00	22.63
	OUR SAVIOR	SHELDON	21	800.00	800.00	38.10
	CHRIST THE KING	SPENCER	128	1,000.00	500.00	3.91
	FIRST ENGLISH	SPENCER	740	32,000.00	15,770.16	21.31
	IMMANUEL	SPIRIT LAKE	730	35,750.00	17,875.02	24.49
	IMMANUEL	TERRIL	142	4,800.00	2,145.00	15.11
	Total			152,910.00	74,896.87	
STORM LAKE	ST JOHN	ALTA	207	12,000.00	6,280.55	30.34
	ST PAUL	ALTA	256	4,900.00	2,923.43	11.42
	ST JOHN	GALVA	334	18,000.00	8,592.93	25.73
	ST PETER	NEWELL	131	7,700.00	2,500.00	19.08
	GRACE	STORM LAKE	344	10,000.00	5,000.00	14.53
	ST JOHN	STORM LAKE	389	5,000.00	3,957.63	10.17
	ZION	STORM LAKE	294	14,200.00	1,202.50	4.09
	Total			71,800.00	30,457.03	
Grand Total					1,466,904	690,205



Is Your Retirement On Track?

The **Iowa District West*** and **Concordia Plan Services** are offering you an opportunity to attend a pre-retirement workshop! This workshop is designed to help you plan for that very important transition in your life: **RETIREMENT!** We encourage you to attend and start learning what you'll need to know about making plans for *your* future.

**Workers from other districts are also invited & encouraged to attend!*

- Applicable to all workers enrolled in the Concordia Retirement Plan (CRP), not just pastors or rostered workers.
- Workers of any age can attend, but it's especially geared for those age 50 or older, and those thinking about retirement.
- Spouses are strongly encouraged to attend, too.
- Learn about:
 - Pension income from the CRP.
 - Understanding Social Security.
 - Figuring out how much to save for the future, and the best savings options for you.
 - Healthcare in retirement, both before and after you qualify for Medicare.
 - Who will you be and what you will be doing in retirement.

Please share this with *everyone* at your ministry that is enrolled in the CRP, as they all need to plan for their future!

Please join us!

**Friday, November 8 &
Saturday, November 9**

St. Paul Lutheran Church

610 15th Street
Ames, IA 50010

**Friday: 7 – 9 PM
Saturday: 9 AM – 3 PM**

Thanks to **LCEF**, there is no cost for this workshop.

Snacks & a light lunch will be provided!

(You are responsible for your own travel and lodging expenses.)

All materials will be provided. Additional information will be e-mailed after you register!

Please register for the workshop by no later than Friday October 18!

To register, please contact: **Cristel Hoffman** – Concordia Plan Services

1-888-927-7526 ext. 6824 or e-mail

Cristel.Hoffman@concordiaplans.org

(She will need to know your name, e-mail, phone number, and if your spouse will attend with you.)

If you'd like an e-version of this flyer to share with others, please contact: Paul.Snyder@ConcordiaPlans.org



Investment Interest Rates for Individuals

Sept. 2019

	MINIMUM	TERM	RATE	APY
Y.I. StewardAccount®				
(portion of balance over \$1,000 earns second-tier rate)				
	\$25-\$1,000	—	3.500%	3.557%
	Over \$1,000	—	1.375%	1.384%
StewardAccount® Certificate				
	\$100	—	0.625%	0.627%
	\$1,000	—	0.750%	0.753%
	\$5,000	—	0.875%	0.879%
	\$10,000	—	1.250%	1.257%
Family Emergency StewardAccount®				
(balances under \$10,000 require monthly electronic investments)				
	\$25	—	1.375%	1.384%
ConnectPlus Term Note--Fixed				
	\$500-\$5,000	2 yrs.	3.000%	3.034%
	Over \$5,000	—	1.250%	1.256%
PartnerPlus Term Note--Fixed				
	\$500-\$25,000	2 yrs.	2.375%	2.396%
	\$500-\$25,000	4 yrs.	2.875%	2.906%
	Over \$25,000	2 & 4 yrs.	1.250%	1.256%
Term Notes and IRA Term Notes-Fixed				
	\$500	6 mos.	1.125%	1.130%
	\$500	9 mos.	1.250%	1.256%
	\$500	1 yr.	2.000%	2.015%
	\$500	18 mos.	2.125%	2.142%
	\$500	2 yrs.	2.250%	2.269%
	\$500	3 yrs.	2.375%	2.396%
	\$500	4 yrs.	2.500%	2.524%
	\$500	5 yrs.	2.625%	2.651%
Term Notes and IRA Term Notes-Floating				
	\$100	30 mos.	2.250%	2.269%
	\$100	60 mos.	2.500%	2.524%
IRA Jumbo Note				
	\$100,000	5 yrs.	3.000%	3.034%
	\$100,000	60 mos.	2.875%	2.906%
HSA Certificate				
	\$1	—	0.625%	0.627%
	\$2,500	—	1.125%	1.131%
	\$5,000	—	1.500%	1.510%
	\$15,000	—	2.125%	2.146%

10733 Sunset Office Drive, Suite 300 | St. Louis, MO 63127-1020 | 800-843-5233 | lcef.org

LCEF is a nonprofit religious organization; therefore, LCEF investments are not FDIC-insured bank deposit accounts. This is not an offer to sell LCEF investments, nor a solicitation to buy. LCEF will offer and sell its securities only in states where authorized. The offer is made solely by LCEF's Offering Circular. Investors should carefully read the Offering Circular, which more fully describes associated risks. LCEF StewardAccount access features provided through UMB Bank n.a. The Dedicated/Demand Certificates and StewardAccount are not available to investors in South Carolina. The Family Emergency StewardAccount is known as the Family StewardAccount in the State of Ohio. ConnectPLUS is not available to investors in Ohio and Pennsylvania. Neither LCEF nor its representatives give legal, accounting or tax advice. Consult your tax advisor as to the applicability of this information to your own situation. UMB Bank serves as a custodian of the LCEF IRA/HSA Programs. The State of Washington has adopted a regulatory position that currently prohibits residents of Washington State from opening a new investment unless they are already an LCEF investor.



Investment Interest Rates for Organizations

Sept. 2019

	MINIMUM	TERM	RATE	APY
Congregation Certificates-Demand				
	\$100	—	0.625%	0.626%
Congregation StewardAccount® Certificates				
	\$100	—	1.000%	1.005%
	\$250,000	—	1.125%	1.131%
	\$500,000	—	1.250%	1.257%
	\$1,000,000	—	1.500%	1.510%
Cemetery Care StewardAccount®				
	\$1,000	—	0.625%	0.627%
	\$25,000	—	0.750%	0.753%
	\$50,000	—	0.875%	0.879%
	\$100,000	—	1.250%	1.257%
PartnerPlus Term Note--Fixed				
	\$500-\$25,000	2 yrs.	2.375%	2.396%
	\$500-\$25,000	4 yrs.	2.875%	2.906%
	Over \$25,000	2 & 4 yrs.	1.250%	1.256%
Congregation Term Notes-Fixed				
	\$500	6 mos.	1.125%	1.130%
	\$500	9 mos.	1.250%	1.256%
	\$500	1 year	2.000%	2.015%
	\$500	18 mos.	2.125%	2.142%
	\$500	2 yrs.	2.250%	2.269%
	\$500	3 yrs.	2.375%	2.396%
	\$500	4 yrs.	2.500%	2.524%
	\$500	5 yrs.	2.625%	2.651%
Congregation Term Notes-Floating				
	\$100	30 mos.	2.250%	2.269%
	\$100	60 mos.	2.500%	2.524%
Congregation Endowment Note-Fixed				
	\$1,000	5 yrs.	2.250%	2.269%
	\$10,000	5 yrs.	2.375%	2.396%
	\$100,000	5 yrs.	2.500%	2.524%
Congregation Endowment Note-Floating				
	\$1,000	60 mos.	2.250%	2.269%
	\$10,000	60 mos.	2.375%	2.396%
	\$100,000	60 mos.	2.500%	2.524%

10733 Sunset Office Drive, Suite 300 | St. Louis, MO 63127-1020 | 800-843-5233 | lcef.org

LCEF is a nonprofit religious organization; therefore, LCEF investments are not FDIC-insured bank deposit accounts. This is not an offer to sell LCEF investments, nor a solicitation to buy. LCEF will offer and sell its securities only in states where authorized. The offer is made solely by LCEF's Offering Circular. Investors should carefully read the Offering Circular, which more fully describes associated risks. LCEF StewardAccount access features provided through UMB Bank n.a. The Dedicated/Demand Certificates and StewardAccount are not available to investors in South Carolina. The Family Emergency StewardAccount is known as the Family StewardAccount in the State of Ohio. ConnectPLUS is not available to investors in Ohio and Pennsylvania. Neither LCEF nor its representatives give legal, accounting or tax advice. Consult your tax advisor as to the applicability of this information to your own situation. UMB Bank serves as a custodian of the LCEF IRA/HSA Programs. The State of Washington has adopted a regulatory position that currently prohibits residents of Washington State from opening a new investment unless they are already an LCEF investor.

You Are Invited!

11th Annual IOWAY Banquet

Celebrate what God is doing in various mission areas: Pacific Junction flood relief, Council Bluffs, Los Angeles, Des Moines, Pasadena, West Virginia and Haiti.

Speakers:

- LERT volunteers
- Annette Howard, Beacon of Hope, Fort Dodge
- IOWAY Coordinators
- Mission team members and more!

Trinity Lutheran Church
801 W. Lincoln Way
Jefferson IA 50129

Saturday, November 9, 2019

Registration at 4:30 PM

FREE yummy, meal catered at 5 PM, compliments of Carole White with Lutheran Church Extension Fund.

- *Relax for an evening of fun—celebrating what God has done through IOWAY!*
- *Hear firsthand about the devastation caused by the flood waters in southern Iowa.*
- *Hear the reaction of those seeing Skid Row for the first time!*
- *Get a 'behind the scene' look at the Rose Bowl Parade at Pasadena.*
- *Fun night of food, friends, laughs, and memories!*



RSVP Please!

Please register:

<https://www.surveymonkey.com/r/iowayBanquet>

Or contact

Ellie Menz

515-370-1159

ellie@iowadistrictwest.org

You Are Invited!

11th Annual IOWAY Banquet

Celebrate what God is doing in various mission areas: Pacific Junction flood relief, Council Bluffs, Los Angeles, Des Moines, Pasadena, West Virginia and Haiti.

Speakers:

- LERT volunteers
- Annette Howard, Beacon of Hope, Fort Dodge
- IOWAY Coordinators
- Mission team members and more!

Trinity Lutheran Church
801 W. Lincoln Way
Jefferson IA 50129

Saturday, November 9, 2019

Registration at 4:30 PM

FREE yummy, meal catered at 5 PM, compliments of Carole White with Lutheran Church Extension Fund.

- *Relax for an evening of fun—celebrating what God has done through IOWAY!*
- *Hear firsthand about the devastation caused by the flood waters in southern Iowa.*
- *Hear the reaction of those seeing Skid Row for the first time!*
- *Get a 'behind the scene' look at the Rose Bowl Parade at Pasadena.*
- *Fun night of food, friends, laughs, and memories!*



RSVP Please!

Please register:

<https://www.surveymonkey.com/r/iowayBanquet>

Or contact

Ellie Menz

515-370-1159

ellie@iowadistrictwest.org



+ being Christ's hands and feet in times of need +

Sponsored by Iowa District West of the Lutheran Church - Missouri Synod

LERT needs you!

"..through love serve one another." Galatians 5:13

Learn to prepare for a natural disaster or to help others and yourself in times of need. Pastors who need to have certification to be on site are also encouraged to attend. We need you!

Iowa District West has immediate need for LERT-certified volunteers to respond after natural disasters and in times of need by giving spiritual comfort and emotional support while providing food, water, clean up, debris removal and helping with basic repairs. This is an opportunity to exercise your Christian faith and use your God-given gifts and talents to help others in need.

It's easy to become a trained Lutheran Early Response Team volunteer!

Take this opportunity to join members throughout IDW in this unique Christ-centered mission. Attend the disaster orientation training event to become FEMA certified through LCMS World Relief and Human Care.

LERT TRAINING

Facilitator - Ellie Menz, IDW Disaster Response Coordinator

SATURDAY, NOVEMBER 2, 2019

TRINITY LUTHERAN CHURCH

641 3RD Ave

MANILLA, IOWA

9 AM - 12 PM

Registration begins at 8 AM

Light breakfast and lunch served

Register online at

<https://form.jotform.com/81215292634959>

(ENTER TRAINING CODE: 0034) Or contact Jill

Davis at the IDW office: 515-576-7666

Please register by Monday, October 28 to help with a count for meals.



+ being Christ's hands and feet in times of need +

Sponsored by Iowa District West of the Lutheran Church - Missouri Synod

LERT needs you!

"..through love serve one another." Galatians 5:13

Learn to prepare for a natural disaster or to help others and yourself in times of need. Pastors who need to have certification to be one site are also encouraged to attend. We need you!

Iowa District West has immediate need for LERT-certified volunteers to respond after natural disasters and in times of need by giving spiritual comfort and emotional support while providing food, water, clean up, debris removal and helping with basic repairs. This is an opportunity to exercise your Christian faith and use your God-given gifts and talents to help others in need.

It's easy to become a trained Lutheran Early Response Team volunteer!

Take this opportunity to join members throughout IDW in this unique Christ-centered mission. Attend the disaster orientation training event to become FEMA certified through LCMS World Relief and Human Care.

LERT TRAINING

Facilitator - Ellie Menz, IDW Disaster Response Coordinator

SATURDAY, NOVEMBER 2, 2019

TRINITY LUTHERAN CHURCH

641 3RD Ave

MANILLA, IOWA

9 AM - 12 PM

Registration begins at 8 AM

Light breakfast and lunch served

Register online at

<https://form.jotform.com/81215292634959>

(ENTER TRAINING CODE: 0034) Or contact Jill

Davis at the IDW office: 515-576-7666

Please register by Monday, October 28 to help with a count for meals.



A MISSION CENTRAL DOCTORATE GIVEN TO DR. RUTH SIMON OF SIOUX CITY, IOWA!

July 28 was indeed a very special Sunday! What a JOY and blessing to travel to Sioux City, Iowa for a VERY "NOT NORMAL EVENT." The dear folks at Redeemer Lutheran wanted to do something special for one of their very NOT NORMAL members. That member is Ruth Simon. They to honored Ruth on her 90th Birthday! It was a wonderful gathering that was so well attended.

Old Missionary Gary was able to travel to Sioux City after speaking in the morning and afternoon at St. Paul Lutheran Church in Bancroft, Nebraska. It was a blessing to be with Pastor Henschen and the congregation there.

Missionary Ruth Simon has been a very faithful friend and supporter of the world famous Mission Central. It was kind of Rev. Russ Senstad and Rev. Dave Zirpel to allow Old Missionary Gary to be part of this event. However, what many do not know is that we were able to present Ruth with an honorary doctorate at this event. From now on it will no longer be "Missionary Ruth Simon," IT WILL BE "MISSIONARY DR. RUTH SIMON"! Old Missionary Gary is pictured presenting the doctorate to Dr. Ruth Simon!

It truly was a day we will long remember. It was a JOY to spend the time with so many of the special friends of Mission Central. All of us here at Mission Central love Redeemer Lutheran, and so many of their members are truly NOT NORMAL! WITHOUT FRIENDS LIKE THESE, WE COULD NOT HAVE CONTINUED ALL THESE YEARS!



REV. VANCE & LINDA BECKER VISIT MISSION CENTRAL ON THEIR WAY TO KENYA!

What a blessing to welcome our NEWEST Missionaries Rev. Vance and Linda Becker from Mankato, Minnesota where Pastor Becker has served as pastor.

This special family has accepted a call to teach at the Matango Seminary in Kenya East Africa. They will be training and "equipping the saints" as pastors, Bible class teachers, and evangelists.

What an honor and privilege to have them spend time in training here at the World Famous Mission Central. When they left, they were prepared to make presentations and ask for prayers and support.

After an EXCELLENT visit with these folks, we could tell that they are truly NOT NORMAL!

It is our hope that they will never forget their visit to the Lord's Mission Central.



PRESIDENT PATTI ROSS AND HER HUSBAND BILL VISIT MISSION CENTRAL!

It was one of those SPECIAL days at the Lord's Mission Central here in the hills of Western Iowa! YES, we welcomed the Supreme Allied Commander of the LWML of The Lutheran Church—Missouri Synod. The Honorable Missionaries Dr. Bill and Dr. Patti Ross came to visit. Patti is the former President of the All Powerful Lutheran Women's Missionary League of The Lutheran Church—Missouri Synod.

For President Ross and her husband Bill to take the time to spend an afternoon here at the Lord's Mission Central was truly a blessing. They had the privilege of seeing the new Creation Theater, the Barn Museum, the offices, and little wayside prayer chapel.

Bill and Patti are special friends who we will never forget! Working with these NOT NORMAL people is truly a special JOY for all of us!



Bill and Patti are pictured in front of our BOSS at the Lord's Mission Central.

Mission Central – LCMS World Mission

40718 Highway E16
Mapleton, IA 51034
712-882-1029

Gary Thies (gary.thies@lcms.org)
Rev. Brent Smith (brent.smith@lcms.org)
www.missioncentral.us

MISSION CENTRAL EVENTS

PLEASE MARK YOUR CALENDARS!

Rev. Shauen Trump

Kenya East Africa

Saturday, September 7, 2019

1 PM



Cindy Wrucke

Czech Republic

Friday, September 13, 2019

1 PM

Rev. John Bombaro & Family

Riga Latvia

Friday, September 27, 2019

1 PM



Rev. Doug & Angie Thompson

Sierra Leone

Friday, September 27, 2019

1 PM



Rev. Walter & Robyn Steele

Kenya

Tuesday, October 8, 2019

1 PM

Mission Central-LCMS World Mission

40718 Highway E 16
Mapleton, Iowa 51034
Phone: 712-882-1029

Gary Thies - gary.thies@lcms.org
Rev. Brent Smith - brent.smith@lcms.org
www.missioncentral.us



!AMIGOS EN CRISTO!

News from **La Iglesia Evangelica Luterana Amigos en Cristo**: Friends in Christ Evangelical Lutheran Church
Vacancy Pastor Daniel Vogel, Denison, Iowa

Iowa District
 West, LCMS

SEPTEMBER
 2019



ANNUAL HISPANIC FAMILY RETREAT!

It's family time at our annual Hispanic summer retreat that took place the first weekend of August. The Perez family of Denison won the award for the most family members present, 14! Part of the extended family, son Luis Miquel and his wife Victoria and 2 children, included our retreat in their vacation from Mexico. The family is pictured (right) at Camp Okoboji where we have held a Hispanic retreat for at least 15 years. At the center are Manuel and Maria, the parents of this special family originally from Mexico. Maria told me that they have attended 14 of our retreats over the years. They are a faithful family from Amigos en Cristo in Denison. We are blessed to have the third generation participating together! Our Retreat had an international flavor as our Hispanic families originally came from many countries, from Mexico, and from a number of Central American countries. God's Word brought our churches together to share the Good News of Jesus as Lord and Savior for all the world!



RETREAT IS A TIME OF UNITY

This year we had 80+ present from Denison and Des Moines with Pastor Lincon Guerra directing the weekend event. The entire "family" was invited to not only relax (one family brought hammocks which were always in use at the beach), to have fun and exercise (we had sports teams in basketball, volleyball and soccer), to eat a lot (great Camp foods with a Hispanic menu), but also to grow in faith in God's Word.

Pastor Guerra taught the adult Bible classes, I taught the Jr. High and High School youth, my wife Paula taught K-2nd grade, and Maria Regalado taught the 3rd-5th graders. Pastor Paul Flo, a new missionary to South Sioux City, joined us and helped with worship and the bonfire meditation. Our theme was "UNIDOS EN CRISTO" (United In Christ!). We thank the Camp Okoboji staff for all their faithful service and dedication to our group.

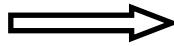




RETREAT STUDIES

The picture at left was my group of 19 youth studying in 2 sessions. In the first session they watched the video "The Privileged Planet," a scientific study of "Intelligent Design" by astro-physics scientist Guillermo Gonzales. We used this study to celebrate God's special creation and His purpose for us and our lives together as the family of God. The kids were very attentive and involved in the discussions.

RETREAT FUN



Even swimming meant working together as the guys built a human pyramid in the lake. In our fun and games (basketball, volleyball and soccer) all worked together to enjoy being a team and to encourage one another.

Our Hispanic families have always enjoyed our retreats at Camp Okoboji. It's a time to be together with family, with church friends, and to make new friends. Over the years, we have gotten to know Lutheran Hispanics from around the state and we pray we can continue these gatherings for many more years.



HAVE WE THANKED YOU LATELY?

Our ministry is a joint outreach through our two Hispanic churches in west central Iowa, in Denison and also in Storm Lake. We are so grateful for the congregations and individuals who sacrificially support our ministry either with special donations or by Thrivent Choice dollars. If you have any questions on how you can support our Hispanic ministry, especially with Thrivent Choice dollars, please contact your local Thrivent Financial representative or call Thrivent at 800-847-4836. We thank all who have shared their love with us in the past months. God bless you! You are welcome to visit our services on Sunday: 10:30AM at Grace Lutheran in Storm Lake and 12:30PM at Zion in Denison.

Rev. Daniel Vogel

32678 Aspen Ave.

Manning, Iowa 51455

Home: 712-653-2354

Cell: 712-309-1292

E-mail: daniel.vogel@ziondenison.org



PLEASE PRAY: + In thanksgiving for the unity enjoyed at our annual Hispanic Family Retreat at Camp Okoboji this past August. + For our new adults studying for Confirmation in Denison: Ruby, Merlin and Alma. + For the Calling process of a bilingual pastor to serve Hispanics in Storm Lake and Denison. + For students and teachers as they start a new academic school year. + For our members and friends traveling during these final weeks of the summer months. + For our Storm Lake ministry, for growth and stability. + *In thanksgiving for the mission hearts of the many individuals and congregations of Iowa District West who support the Lord's work among Hispanic immigrants in Denison and Storm Lake and also in our other two missions in Sioux City and Des Moines. +++*

HISPANIC OUTREACH IN SIOUXLAND

Rev. Henry and Ruthie Witte
1013 South Newton Street
Sioux City, IA 51106
712-202-4751
handrwitte@gmail.com



September 2019

Pastor Paul Flo and Pastor Henry Witte

“The true light that enlightens every man was coming into the world.” John 1:9 (RSV)

During July and August, Pastor Henry received 32 sessions of radiation treatment of photon radiation. The doctor said that is was a high energy x-ray. It passes through the outer layer of the body and is focused on the areas which have cancer or may have undetected cancer cells. Actually, a photon is the basic unit of all light, and the x-ray is a form of high energy light with a very short wavelength. Even though Pastor Henry does not fully understand all of that description, he noticed that a form of light was being used to cure his illness, an illness which would be undetected without the use of special tests and scans by trained doctors and technicians. How similar to our sinful condition and its cure. Someone special has to show us our condition and use a special light to cure us; only in this case it is all one person. Through His Word, Jesus Christ shows us our sin and shines His saving light to cure us and bring us in faith to everlasting life and light. May He help us to give testimony to His light.

Pastor Paul has been visiting the Hispanic members and contacts in Sioux City and South Sioux City. He also is making preparations to begin the English classes on August 19. Posters have been hung around Dakota City, South Sioux, and Sioux City; handouts have been delivered; and all students from previous years have been contacted. Several potential students have already been in touch with Pastor Paul about the upcoming classes. We pray that God will bless us by opening doors for relationships and conversations with many Hispanics in the Siouxland area.

Pastor Paul was also able to participate in the Hispanic Retreat at Camp Okoboji, the second weekend of August. There was a great turnout this year—nearly 80 people! Pastor Paul had the chance to get to know Pastors Lincoln Guerra and Daniel Vogel. Through many wonderful discussions and moments with the Hispanic families from Des Moines, Storm Lake, and Denison, Pastor Paul is already in contact about possibilities for a reunion in the next months and ways to continue working together and supporting one another in the future.

We are planning a special event to celebrate National Hispanic Heritage Month (September 15-October 15). There is a parade that passes right by Hope Lutheran in South Sioux City, so we are considering ways to show our appreciation and love for the Hispanics in our community with open doors and free food, handouts, and other ways to connect.



Hispanic Retreat – August 2019 – Camp Okoboji



Hispanic Retreat down by the Lake

Luke 12:49-53

⁴⁹"I have come to bring fire on the earth, and how I wish it were already kindled! ⁵⁰But I have a baptism to undergo, and how distressed I am until it is completed! ⁵¹Do you think I came to bring peace on earth? No, I tell you, but division. ⁵²From now on there will be five in one family divided against each other, three against two and two against three. ⁵³They will be divided, father against son and son against father, mother against daughter and daughter against mother, mother-in-law against daughter-in-law and daughter-in-law against mother-in-law."

Have you ever noticed how many warning signs you pass by in the average day? Signs like "Do Not Enter," "School Crossing," "Caution: Wet Floor." There's a hilarious warning circulating on the Internet (author unknown). It goes like this:

WARNING: Do Not Shampoo Your Hair In The Shower! It's so good to finally get a health warning that is useful. It involves the shampoo when it runs down your body while you shower. Shampoo Warning! I don't know WHY I didn't figure this out sooner! I use shampoo in the shower! When I wash my hair, the shampoo runs down my whole body, and printed very clearly on the shampoo label is this claim: "FOR EXTRA BODY AND VOLUME."

No wonder I have been gaining weight! Needless to say, I have gotten rid of that shampoo and I am going to start showering with Dawn dish soap. Its label reads like this: "DISSOLVES FAT THAT IS OTHERWISE DIFFICULT TO REMOVE."

Problem solved! Good bye diet, hello Dawn soap.

In our Bible passage for today Jesus has a warning for his followers. The warning is this: We Christians will face

criticism and rejection, even in our most intimate relationship, our relationship with our family. Listen closely to these disturbing words:

"From now on there will be five in one family divided against each other, three against two and two against three. They will be divided, father against son and son against father, mother against daughter and daughter against mother, mother-in-law against daughter-in-law and daughter-in-law against mother-in-law."

That sounds like some families I have known. Just kidding, but could Jesus cause such division? No, but sin, Satan and our own sinful flesh does. This is a difficult passage.

We want Christ to give us peace in our homes and in our world; but we misunderstand God's promise of peace. The peace of Christ is a gift between God and His children. No longer do we live in fear of an angry God or God's wrath. Christ isn't promising we'll get along with our fellow man. Our peace is with God. That's the peace we desperately need and that's the peace Christ gives to His followers.

I know that there are those of us who want the church to be a beacon of peace in our society. We want our faith in Jesus to bring greater peace and unity and understanding to our families, our towns, and our world. But that's not our ultimate goal. The goal of the church is to bring the Good News of Jesus Christ to a lost and hurting world. Our job is to tell people about the only true God and that He loves us. He died for our sins and rose to life to share His victory with us.

Being a committed Christian means giving up all other gods. It means putting God above everything, including our love for our family and our love for our own lives.

The life, death and resurrection of Jesus brings true peace to a world filled with sin. This truth might also bring peace to our hearts. But it also marks the greatest dividing line in human history. Either you are for Him or against Him. Either

you a Christian or you are not. We are called to share this truth. It might mean that people shun us or even treat us bad, but fear not...Christ is with you. Never will He leave you nor forsake you. That's a promise. When others leave you and forsake you...He is still there.

Prayer:

*Love divine, all loves excelling,
Joy of heav'n, to earth come down!
Fix in us Thy humble dwelling,
All Thy faithful mercies crown.
Jesus, Thou art all compassion,
Pure, unbounded love Thou art;
Visit us with Thy salvation,
Enter ev'ry trembling heart. (LSB 700:1)*

Pastor Russell Senstad
Redeemer, Sioux City, IA

THE LAMPLIGHTER



Theme: “Peace on Earth? Not really...”

September 2019

*A Publication of The Lutheran Service Auxiliary
Sioux City, Iowa*

The Good Shepherd Hour airs every Sunday
morning on the following radio stations:

KSCJ – 1360 AM & 94.9 FM	Sioux City at 8 a.m.
KLEM – 1410 AM & 96.9 FM	Le Mars at 8 a.m.
KAYL – 101.7 FM	Storm Lake at 8:30 a.m.
KVFD – 1400 AM	Fort Dodge at 8 a.m.

AROUND THE DISTRICT

Iowa District West

September 2019

The following information is shared by District congregations/circuits.
To include your church's event, etc., send information to sue@iowadistrictwest.org.

Advent Wreath Available

The wrought iron Advent wreath from Immanuel, Adair is available to any congregation that may have a use for it. If interested, please contact Rev. Ted Weishaupt (cell: 712-249-0240) to make arrangements for pick-up.



You are invited to join the members of Trinity Lutheran Church in Boone
on Sunday, September 15, 2019 to celebrate

Pastor Lindsay Watkins' 40 Anniversary in the Ministry!

Coffee at 9 am

Special Church Service at 10 am

Celebration Reception at Cedar Pointe Golf Club from 1-3 pm
(601 South Cedar Street, Boone)

9 Hole Best Ball Golf Tournament at 3 pm

For more information, contact the church office at 515-432-5140.



What's Happening at Your Camp!



Camp Okoboji has a special offer for congregations and their youth. Izaak Wendorff, Assistant to the Ministry Director, will work with pastors, DCEs, and youth leaders to lead a lock-in at your church. REVIVE is the theme for this event! Please check out the Camp website for available dates, information, and forms to register for this event. Our first lock-in will be at Trinity Lutheran Church in Odebolt on September 6-7, 2019.

Camp Okoboji will be hosting the IDW Lutheran Schools Outdoor Education program September 18-20, 2019. This program is designed for students in grades 5 & 6. This year we have a special treat with an evening concert on September 19 given by Dave and Sabra Horn. If there is a group of home school children of this age that would like to join us for this educational event, please contact Lori Gamble by calling the Camp office or emailing her.

**There are still seats available on the bus for the Creation Museum and Ark Encounter trip on September 23-27, 2019
Please contact the Camp Office to reserve your seat!**

Camp Okoboji has a new ministry opportunity for veterans with PTSD. This opportunity is a Music Therapy Camp and will be held September 25-29, 2019. For more information, please call Kirk Warnke at the Camp Office.

Camp Okoboji Contact Information

Website: www.campokoboji.org

Office: 712-337-3325

email: camp@campokoboji.org

Kirk Warnke

email: kirk.campokoboji@gmail.com

Lori Gamble

email: lori@campokoboji.org

Kellie Jones

email: kellie@campokoboji.org

Izaak Wendorff

email: Izaak.campokoboji@gmail.com

Fun Adventure for Anyone!

Cost for this trip includes:

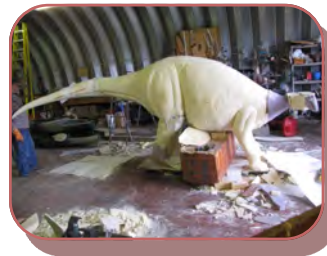
- ⇒ Bus Transportation
- ⇒ Hotel room
- ⇒ Tickets to the Creation Museum and the Ark Encounter

The Quality Inn and La Quinta will have complimentary breakfast and free WiFi.

All other meals will be on your own. While traveling, our lunches will be at fast food restaurants along the way. The Creation Museum and the Ark Encounter have food places for lunches as well. We will have nice evening meals at sit down restaurants which will be either within walking distance or the bus will take the participants.

The Answers in Genesis Creation Museum is a one-of-a-kind, high-tech museum, filled with animatronic displays (e.g., moving dinosaurs), striking videos, a state-of-the-art planetarium, Special Effects Theater, etc., that is spread out over 60,000 square feet, incorporating up to 40-foot ceilings to contain some of its massive exhibits. The museum will go beyond telling the compelling story of the creation of life on this planet to proclaiming the Bible as supreme authority in all matters it addresses.

Ark Encounter features a full-size Noah's Ark, built according to the dimensions given in the Bible. Spanning 510 feet long, 85 feet wide, and 51 feet high, this modern engineering marvel amazes visitors young and old. Ark Encounter is situated in the beautiful Williamstown, Kentucky, halfway between Cincinnati and Lexington on I-75. From the moment you turn the corner and the towering Ark comes into view, to the friendly animals in the zoo, to the jaw-dropping exhibits inside the Ark, you'll experience the pages of the Bible like never before.



▶ Camp Okoboji

1531 Edgewood Drive
Milford, IA 51351

Phone: 712-337-3325
Fax: 712-337-3318
E-mail: lori@campokoboji.org

Camp Okoboji
Jesus at the Lake

Creation Museum and Ark Encounter Bus Trip



September 23-27, 2019

What to Bring!

- ◆ Bibles
- ◆ Comfortable walking shoes
- ◆ Casual Clothing
- ◆ Camera
- ◆ Light jackets and umbrellas in case of rain
- ◆ Snacks
- ◆ Water Bottle
- ◆ DVDs to watch on the bus (optional)

Our Vision
Refreshing Body & Spirit

Our Mission
We provide Sanctuary which connects guests
with God and His Creation

Our Values
Gospel, Safety, Excellence, Wellness,
Stewardship, Legacy

Additional Information

Depart from Camp Okoboji at 7 am on September 23, 2019 The first stop will be in the Fort Dodge area to pick up participants. The next stop will be at the Quality Inn on Lynch Drive in Danville, Illinois.

On September 24, the bus proceeds to the hotel in Florence, Kentucky to check in and relax.

We will spend all day Wednesday at the Museum.

We will spend Thursday at the Ark Encounter.

On September 27, the bus will leave at 7 am and return to Camp late in the evening. There is lodging available at Camp on Sunday, September 22 and Friday, September 27 at an additional cost of \$15 per night per person for non-AC facilities and \$30 per person for AC facilities. Please contact the Camp office at the number below to reserve lodging.

Phone: 712-337-3325

Fax: 712-337-3318

E-mail: lori@campokoboji.org

Website: www.campokoboji.org

Camp Okoboji

1531 Edgewood Drive
Milford, IA 51351

Registration Form (please print)

Family Name _____

Address _____

City/State/Zip _____

Home Phone (____) ____ - ____

Cell Phone (____) ____ - ____

Email _____@_____

Participant 1 _____ M or F

Participant 2 _____ M or F

Participant 3 _____ M or F

Participant 4 _____ M or F

☐ Single occupancy **\$975**

☐ Multiple occupancy **\$675 per person**

☐ Sunday Lodging At Camp \$15 per person

☐ Friday Lodging At Camp \$15 per person

Fees include: Bus cost, Hotel costs, and tickets to the Creation Museum and the Ark Encounter. All meals are on your own.

Make Checks payable to Camp Okoboji.

If paying by Credit/Debit Card please include the following information:

Card Number _____

Exp Date _____ Sec Number _____

Total Amount \$ _____

Name on Card _____

Billing Address _____

City/State/Zip _____

Signature _____



Lutheran Family Service

For Nothing is Impossible with God

Administrative Office

409 Kenyon Road. Suite C

Fort Dodge, IA 50501

515-573-3138

info@LutheranFamilyService.org

www.LutheranFamilyService.org

Bad News Abounds...

You don't have to look far to find it.

- Iowa is the Midwestern state with the highest rate of cancer
- 15% of adults will experience significant depression in their lifetime
- 1 of every 8 couples know the pain of infertility
- Opioid-related overdose deaths grew 250% in Iowa over the past 12 years

Not one of us is immune from the troubles of this world. This has been true throughout history, and it's true for us today. Despite what we are tempted to believe, being a Christian doesn't make us immune from trouble.

Why then are we so often surprised when trouble comes? Cognitively we know it's not true, yet subconsciously we believe that trouble will come to others - never to us. And that's not the only misbelief we live with.

Our pride, our fierce independence, our cultural resistance to asking for help, all fuel this big misbelief: "It's

fine for other people to seek help in times of trouble, but not me. I should be able to handle it by myself." Not only do we not ask for help, we often resist help when it is offered. People in helping professions like pastors, teachers, and nurses are especially susceptible to this misbelief.

Scripture has something important to say about both these falsehoods.

First, trouble will come - even to Christians. Jesus clearly communicates this reality. He doesn't say we might have trouble. He says we will have trouble (John 16:33).

When we do, then what?

We are called to live in community (Romans 12:4-5) and to bear one another's burdens (Galatians 6:2). We are all part of one body, not set apart to suffer silently and alone (1 Corinthians 12:26).

What would it look like if we lived according to these beliefs?

Imagine life in a Christian community where all believers, including

their leaders, anticipated trouble, spoke openly about it and then allowed others to help them through it. A beautiful life - not free from pain - but loads lightened and burdens shared by fellow believers!

Help comes when we share our burdens with fellow Christians who listen, care for, and walk with us through hard times, trusting together in the One whose promise brings relief and hope: "I have said these things to you, that in me you may have peace. In the world you will have tribulation. But take heart; I have overcome the world."

Lutheran Family Service exists to help you and members of your congregation bear the burdens you carry from the past, those you face today, and those you will inevitably encounter tomorrow.

If you are not in a community close to one of our offices, call us anyway. We will arrange a way to connect with you.

Meet Your Newest LFS Counselors

Two helpful resources are now available within the LCMS church (as we serve as a ministry to our own) and to those outside the church who have no faith connection (as we serve as a mission outreach of our LCMS churches): Meet Lutheran Family Service counselors Rev. Mike Moreno and Sue Shields.



Rev. Mike Moreno, PMSW



Sue Shields, LMHC

Partner Needed

Has God gifted you with resources to share? Your partnership is needed today to help sponsor the charitable work of LFS. Contact Executive Director Rev. Max Phillips or Wanda Pritzel at 515-573-3138 or visit the Lutheran Family Service website at LutheranFamilyService.org to explore needs and share your desire to help. Thank you!



A SPECIAL INVITATION TO VISIT WITH

**Rev. Bill Wrede
Director of Admissions
CONCORDIA SEMINARY ST. LOUIS**

Laudamus Choir Tour Itinerary October 11-13, 2019

You are invited to meet with Rev. Bill Wrede, Director of Admissions at Concordia Seminary, to discuss seminary education and the path to becoming a pastor or deaconess. Please contact Rev. Wrede at 314.505.7221 or wredew@csl.edu to schedule an appointment. Walk-ins are also welcome.

Friday, October 11

St. Matthew Lutheran Church

700 NE Chipman Road
Lee's Summit, MO 64063
816.524.7068

3:00 pm Appointments

7:00 pm Concert*

Saturday, October 12

St. Paul's Lutheran Church

239 Frank Street
Council Bluffs, IA 51503
712.322.4729

3:00 pm Appointments

7:00 pm Concert*

Sunday, October 13

Pacific Hills Lutheran Church

1110 S. 90th Street
Omaha, NE 68124
402.391.9625

10:30 am Worship*

Sunday, October 13

Living Faith Lutheran Church

2180 NW 142nd Street
Clive, IA 50325
515.987.4030

4:00 pm Appointments

7:00 pm Concert*

*Please join us for the *Laudamus* Fall 2019 Concert Tour Under the direction of Dr. James Marriott. Concordia Seminary's premier choir, *Laudamus*, delights in proclaiming the Gospel of Jesus through music. <https://www.csl.edu/campus-life/music-arts/laudamus/>

Lutherans For Life of Iowa 2019 Fall Conference

Life Issues in Relation to Creation

Featuring Semisaurus



Date: Saturday, **September 28, 2019**

Location: **Trinity Lutheran Church & School**
1361 7th Ave SW
Cedar Rapids, IA 52404

Schedule:

- 9:30 – 10:00 AM Registration
- 10:00 – 10:15 AM Welcome & Opening Devotion
- 10:15 – 11:30 AM Keynote Speaker – **Brian Young**
- 11:30 – 12:15 PM Light lunch (*free will donation*)
- 12:15 – 1:30 PM Keynote Speaker – **Brian Young**
- 1:30 – 1:45 PM Closing Devotion
- 2:00 – 2:30 PM Business meeting w/elections



"From Invisible to Indispensable..."

"On the contrary, the parts of the body that seem to be weaker are indispensable" (1 Corinthians 12:22)

2020 IOWA Essay Contest

Sponsored by the Council of Federation Presidents, Lutherans For Life

For students in Grades 6 through 12

Any Lutheran student or student in a Lutheran school is eligible

Contest Guidelines

Students will write a life-affirming essay based on the 2020 Conference theme: **"From Invisible to Indispensable..."** and Conference bible verse: *"On the contrary, the parts of the body that seem to be weaker are indispensable" (1 Corinthians 12:22)*

1. Not incorporating the conference verse in the essay will disqualify the entry.
2. Examples of topics the essay could deal with are, but not limited to: abortion, the handicapped, adoption or foster care, infanticide, cloning, stem cell research, physician assisted suicide or euthanasia.
3. Essays should include student's name, grade (Identify school or church) and email address. All entries submitted by a teacher or pastor, should include their name and email address. This information should be submitted on the rubric page used in grading the essay.
4. All sources for references, statistics and quotes should be incorporated within the essay and then included in a bibliography at the end.

Grades 6 - 8 should submit essays up to 400 words

Grades 9 - 12 should submit essays up to 750 words

Entries should be submitted digitally using Microsoft Word via email to Kie Maas at kmaas48@mchsi.com by **March 15, 2020**.

5. There will be an Iowa award for each of the two categories for the state of Iowa Essay Contest. The two winners will advance to the national contest.
6. Grand Prize for the national winning entry at each level: \$250 plus free conference registration to a 2020 Regional Conference and one night stay at the conference hotel.
7. All entries become the property of Lutherans For Life.
8. For questions or resources on the sanctity of life, see: lutheransforlife.org



Rubric for Assessment of the Life Essay

(maximum of 21 points for each essay)

	3	2	1	0
ORGANIZATION Structure Transitions	Logical progression of ideas with a clear structure that enhances the thesis. Transitions are mature and graceful. The essay has a nice smooth flow between ideas.	Logical progression of ideas. Transitions are present equally throughout essay. The essay has a flow of ideas.	Organization is clear. Transitions are present in some places but may be missing in others. In places flow is interrupted or doesn't exist.	No discernable organization. Transitions are not present. Connections between ideas seem confusing or incomplete.
INTRODUCTION Background/History Thesis Statement CONCLUSION	Well-developed introduction engages the reader-creates interest. Contains detailed background information. Thesis clearly states a significant and compelling position or belief. Conclusion effectively wraps up & goes beyond restating the thesis.	Introduction creates interest. Sufficient background information is provided. Thesis clearly states the position or belief. Conclusion effectively summarizes topics.	Introduction adequately explains the background, but may lack detail. Thesis states the position or belief. Conclusion is recognizable and ties up almost all loose ends.	Background details are a random collection of information, unclear, or not related to the topic. Thesis is vague or unclear. Conclusion does not summarize main points.
MAIN POINTS Body Paragraphs, Bibliography	The main idea or thesis statement is clearly defined. There may be more than one key point. Appropriate relevant information and details are shared from a variety of sources including personal experiences, observations, feelings and prior knowledge. Supporting details are accurate, relevant, and helpful in clarifying the main idea(s). Statistics or research are used effectively. A simple bibliography gives the references for the resources used.	The main idea can be identified. The writer shares relevant information, facts and experiences. There is a clear distinction between general observations and specifics. Supporting details are relevant and explain the main idea. Research is evident and statistics are used. Missing information in bibliography.	The main idea can be identified. The writer shares some information, facts and experiences, but may express feelings without much to substantiate it. There may be problems going from general observations to specifics. Stronger support and greater attention to details would strengthen this paper. Statistics and research do little to help support the main idea. Incomplete bibliography.	More than one of the following problems may be evident: The main idea is not identifiable. The writer shares some information, but it is limited or unclear. Details are missing or repetitious. Statistics are missing. No bibliography.
FOCUS LFL Mission, Conference theme verse	The paper is in complete agreement with the mission of Lutherans for Life and focuses on the conference theme verse.	The paper is in agreement with the mission of Lutherans for Life and somewhat focuses on the conference theme verse.	The paper doesn't completely agree with the mission of Lutherans For Life and touches on the conference theme verse.	Little or no effort has been made to address the mission of Lutherans For Life and doesn't focus on the conference theme verse.
BIBLICAL ACCURACY	Several Biblical references give strong support for the main idea and are a natural part of the essay. Verses used are interpreted accurately. Citations are accurate.	Biblical references are used to support the main idea. Verses used are interpreted accurately. Citations are accurate.	There are places where a Biblical reference would have helped support the main idea. There are some problems with interpretation of the verses used. Citations are accurate.	Little effort is given to use Biblical references to support the main idea. Problems exist in the interpretation of the verses and their citations.
STYLE Writer's Voice, Audience Awareness	The paper is honest and enthusiastic. The language is natural yet thought-provoking. It brings the topic to life. The reader feels a strong sense of interaction with the writer and senses the person behind the words. Writing is smooth, skillful, and coherent. Sentences are strong and expressive with varied structure.	Writer's voice is consistent and strong. The writer is aware of an audience. The reader is informed and remains engaged. Sentences have varied structure.	Writer's voice may emerge strongly on occasion, then retreat behind general, vague, tentative, or abstract language. The writer is aware of an audience. The reader is informed, but must work at remaining engaged. Sentence structure shows some variety.	Writing is confusing, hard to follow. Language is vague. No audience awareness. No variety in sentence structure.
MECHANICS Spelling, punctuation, capitalization	Punctuation, spelling, capitalizations are correct. No errors.	Punctuation, spelling, capitalizations are generally correct, with few errors. (1-2)	A few errors in punctuation, spelling, capitalization. (3-4)	Distracting errors in punctuation, spelling, capitalization

	POINTS
ORGANIZATION	
INTRODUCTION/CONCLUSION	
MAIN POINTS	
FOCUS	
BIBLICAL ACCURACY	
STYLE	
MECHANICS	
TOTAL POINTS	

Students Name _____

Church/School _____ Grade _____

Address _____

City _____ State _____ Zip _____

Student Email Address _____

Phone Number _____

Teacher/Pastor _____ Email _____

Operation Barnabas

A young woman who graduated from high school here in Greenfield this past May, also graduated from Army Basic Combat Training at Ft. Sill in Oklahoma in early August. She and her family are not members of my congregation but they are good friends of ours. I wrote to her while she was in basic. I also wrote to her drill sergeants and her company commander. I wrote prayers to all of them. The work they do in training our new, young soldiers is absolutely crucial. The sacrifices they make on behalf of defending our freedom and keeping the peace is something to which we may not give much thought.



Have you ever prayed for our drill sergeants? Remember them in your prayers occasionally.

For a young person to consider and then make the decision to enlist and serve in our armed forces is a very serious matter. We don't like to talk about it, but we instinctively know the reason why we must have strong, powerful, ready, and very lethal armed forces. We live in a fallen world. The world is filled with godless, wicked, and oppressive people who seek to impose their will upon others. This is the inherent aspect of our sinful nature. "I want to be God!" This shows forth in nations and leaders constantly taunting and threatening each other. That has been the sad legacy of humanity since the fall of Adam and Eve into sin. The results often lead to the same inevitable destination. Nations wage war against each other. When conversation and diplomacy are no longer possible, armed force must then be used to re-establish peace.

Knowing this to be true, the ministry of Operation Barnabas seeks to serve and minister to those who engage in this somber but necessary work. We pray for those who willingly serve and who put their lives on the line to do what sometimes must be done. We also pray for our enemies as our Lord Jesus Christ calls us to do. We pray that peace will one day rule in the world.



Until then, we continue to support those who serve. We pray for our warriors, their families, and all who are military connected. We ask God's blessings upon their arms and for their safety while they serve in harm's way.

Gracious Lord and Heavenly Father,
We pray for all who serve in our armed forces along with their families and friends. Keep them safe and keep them strong. We pray for Your peace to reign in the world, and that Your good and gracious will may always be accomplished among nations. In Your Son and our Savior Jesus Christ always and only we pray. Amen.

Rev. Dr. (Sergeant) Keith Schweitzer / keithlcms@gmail.com / 641-745-5143



Operation Barnabas Conference

Saturday, October 12, 2019
9:30 a.m. — 3 p.m.

St. Paul Lutheran Church
1844 Highland Drive, Carroll, Iowa
(Enjoy coffee and rolls from 9 to 9:30 a.m.)

Conference is hosted by the Iowa District
West Operation Barnabas, along with Lutheran Church
Extension Fund. There is no charge for the conference.
Lunch will be provided.

Join us as we work together to serve our military families.
Hear presentations from national Operation Barnabas leaders
and learn how churches can be *"called to serve."*

Registration information in your church office
or register online at
<https://www.surveymonkey.com/r/P2QSQ7Q>.





A newsletter of LCMS Rural & Small Town Mission

REACHING RURAL AMERICA FOR CHRIST

“... and we implore You that of Your mercy You would strengthen us through the same in faith toward You and fervent love toward one another; through Jesus Christ, Your Son, our Lord...”

—Post-Communion Collect, Divine Service, *Lutheran Service Book*



Our “Life Together”

- To follow the core beliefs of the LCMS
- To equip rural professional and lay leaders
- To support congregations in community engagement



Please Pray for These Important Dates

Sept. 26 – Webinar

“Church Reflections”
with the Rev. Benjamin Meyer, Hope
Lutheran Church, Sunbury, Ohio
1–2 p.m. CST

Oct. 26

Engaging the Wandering (ETW) event
Groton, S.D., with the LCMS South
Dakota District
9:30 a.m.–3 p.m. CST

Oct. 27

Engaging the Wandering (ETW) event
Hartford, S.D., with the LCMS South
Dakota District
1–6 p.m. CST

Nov. 14–16

RSTM National Conference
Doubletree by Hilton Hotel Bloomington-
Minneapolis South, Minneapolis
lcms.org/rstm/conference

STRONG FAITH, FERVENT LOVE

Marked by a Living Hope

By the time this article makes its way to you, I will have been installed and serving with the saints in Madison, Neb., for a whole month. While this reality is still a way off as I write this, I am confident that the Lord’s hand is and will be with me in my ministry and with you in yours as well! It’s at times like this that I often turn to 1 Peter 1:3 where we are reminded, “Blessed be the God and Father of our Lord Jesus Christ! According to his great mercy, he has caused us to be born again to a living hope through the resurrection of Jesus Christ from the dead.”

Several years ago, as I was early in my journey with RSTM, I wrote about this passage: “While I’m not one to say, ‘This is my favorite passage in Scripture,’ if I were hard pressed, 1 Peter 1:3 would certainly make the list. What joy it is to know that we are able to praise our God regardless of the circumstances because we have been given new life in Jesus Christ. This is phenomenal news, yet even better is knowing that this new life is marked by a ‘living hope.’

While we may find ourselves in terrible straits in this worldly sojourn (‘though now for a little while, if necessary, you have been grieved by various trials’), we can without fail rejoice ‘with joy that is inexpressible and filled with glory,’ for in Christ we have obtained the outcome of our faith, ‘the salvation of your souls.’ Even when things seem beyond what we can take, when our ministry appears to be difficult at best, futile at worst, our Savior Jesus lives, and because He lives our hope is not lost but lives in Him ... ‘and hope does not put us to shame, because God’s love has been poured into our hearts through the Holy Spirit who has been given to us’ (Rom. 5:5).”

Thanks be to God, His Word remains steadfast, even when the circumstances of our life change according to His good and gracious will. May we always remember this truth *for us*, and may God bless you in whatever stage of ministry you are in now!

Pastor Todd Kollbaum



Church Reflections

by Rev. Benjamin Meyer, Hope Lutheran Church, Sunbury, Ohio

“Check the Mirror, Pastor — After Five Years, Your Church Looks Like You.” This was the headline of an article that caused me to stop and reflect. If it’s true that after five years the congregation I serve will look a lot like me, is that a good thing or a bad thing?

If congregations begin to reflect their pastor over time, it might lead the pastor to think about what he should do to shape his congregation. The pastor will be tempted to think about how *he* can and should shape it: *How can I make my congregation enthusiastic for evangelism? How can I make my congregation take the Word of God seriously and want to study it? How can I shape my congregation to make an impact in our community?*

But if those are the first questions the pastor asks, his focus is in the wrong

place. When I first read that headline and the accompanying article, the reality that my congregation would reflect me as a pastor felt like a heavy burden to bear. *Do I really want my congregation to look like ... me?* To paraphrase St. Paul, *Do I really want my congregation to look like the chief of sinners?*

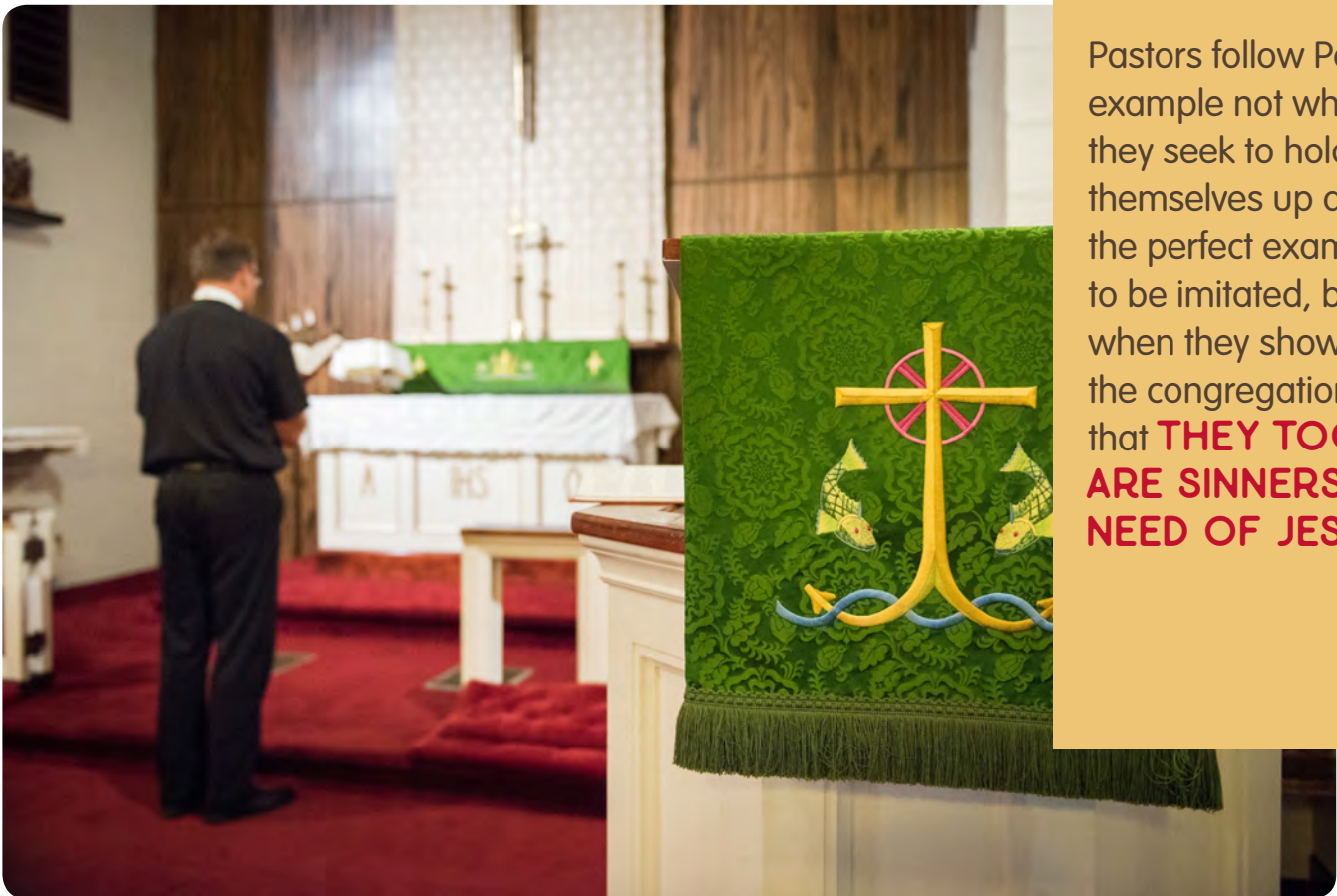
And yet, St. Paul also wrote in 1 Cor. 11:1, “*Be imitators of me, as I am of Christ.*” How can Paul claim to be the chief of sinners and yet say, “be imitators of me”? How can a pastor do the same?

In short, Paul wasn’t seeking to have the focus on him, but on Christ. He understood that the example he set would impact how those to whom he was ministering would see Christ. By speaking of himself as the chief of sinners and as the least of the apostles, Paul modeled

the reality of the need for Christ and His forgiveness.

Pastors follow Paul’s example not when they seek to hold themselves up as the perfect example to be imitated, but when they show the congregation that they too are sinners in need of Jesus. By spending time in God’s Word on a daily basis, devoting time to prayer, forgiving and seeking forgiveness quickly, valuing and hungering for the Lord’s Supper, and being honest about their weaknesses, pastors model the very things they want to see in the flock they serve.

There’s much more to discuss concerning this topic, but I think it starts with pastors echoing the words of John the Baptist: “*He must increase, but I must decrease*” (John 3:30).



Pastors follow Paul’s example not when they seek to hold themselves up as the perfect example to be imitated, but when they show the congregation that **THEY TOO ARE SINNERS IN NEED OF JESUS.**



EARLY REGISTRATION OPEN UNTIL SEPT. 1!

The 2019 National Rural & Small Town Mission Conference will be held Nov. 14–16 in Minneapolis, Minn., at the Doubletree by Hilton Hotel Bloomington-Minneapolis South. Registrations made after Sept. 1 are available but at an increased rate. Register before Sept. 1 for the early registration rate!

Guest Speakers

Keynote speakers will include the Rev. Todd Kollbaum, director, LCMS Rural & Small Town Mission, and the Rev. Dr. Harold L. Senkbeil, executive director for Spiritual Care, DOXOLOGY. The Rev. Robert Zagore, executive director, LCMS Office of National Mission, will lead the theme Bible study of the conference.

Sessions

This conference is meant for anyone living in, serving or interested in rural or small-town areas, with topics and resources specifically suited for this unique mission field.

Breakout topics include dealing with addictions, mental health, bi-vocational pastors and partnering with LERT. Returning this year will be a special track for Youth Ministry, led by youth peer leaders and designed for your youth to join us as well. This option has a limited number of seats and requires attendance at all six sessions.

There is something planned for everyone, from lay person to pastor, student to teacher. We encourage you to bring your whole family to spend a few days together. Enjoy the Mall of America and take advantage of the special family rates that include access to all conference activities. Plus, you can earn Continuing Education credits through Concordia Theological Seminary, Fort Wayne, Ind.

Registration

Adult registration for the conference is \$225/person and includes all plenary and breakout sessions, materials, Thursday dinner, Friday lunch and dinner, and more. See our registration form for rates for youth, students, families, couples, meals only and groups. Please contact our office with any questions.

Lodging

Hotel reservations must be made separately from conference registration. The Doubletree is offering a rate for our group of \$100/single or double plus applicable taxes. This includes complimentary breakfast buffet, self-parking, and airport and Mall of America shuttles. Be sure to ask for the LCMS Rural & Small Town Mission Conference special rate. The deadline for hotel reservations is Sept. 30, but we have filled our hotel block the past few years, so don't delay. More information and online registration can be found at lcms.org/rstm/conference.

Shirt Orders

This year we will have a theme t-shirt in addition to our standard apparel.

Theme t-shirts:

- Blue, short sleeve, youth-adult S–XL \$8 each (2XL \$10, 3XL \$14, 4XL \$16)
- Blue, long sleeve, youth-adult S–XL \$10.50 (2XL \$12.50, 3XL \$14.50, 4XL \$16.50)

Men's and women's polos:

- Gray or white, S–XL \$19 each; 2XL–6XL \$21 each

Order online when registering or by contacting our office by Oct. 15 and you can pick up your shirt at the conference.



Reaching Rural America for Christ is published monthly by LCMS Rural & Small Town Mission.

Reaching Rural America for Christ may be reprinted with acknowledgment given to The Lutheran Church—Missouri Synod.

© 2019 LCMS

Staff

Rev. Todd Kollbaum
Director, LCMS Rural & Small Town Mission

Amy Gerdts
Coordinator, LCMS Rural & Small Town Mission

Chrissy Thomas
Designer

Contact us

We want to hear from you! If you have ideas for future issues, comments, or feedback on articles you've read in *Reaching Rural America for Christ*, please contact Amy Gerdts at the RSTM office.

LCMS Rural & Small Town Mission
205 S. Main, P.O. Box 719
Concordia, MO 64020

888-463-5127
rstm@lcms.org
lcms.org/rstm
[f lcmsrstm](#)

How to Subscribe

To subscribe to *Reaching Rural America for Christ*, contact Amy Gerdts at the RSTM office by calling 888-463-5127 or sending an email to amy.gerdts@lcms.org.

Support This Work

LCMS Rural & Small Town Mission supports and encourages rural and small-town congregations in engaging their communities and growing together in Christ through Word and Sacrament.

Click the Give Now button to support the work of RSTM.

GIVE NOW

Thrivent members: Remember that RSTM is eligible for Thrivent Choice Dollars!

Upcoming RSTM Events

Don't forget that Rural & Small Town Mission provides free monthly webinars on topics important to congregations in town and country settings. Up next is **“Church Reflections”** with the Rev. Benjamin Meyer on Sept. 26, followed by **“Moving Beyond Survival: DOXOLOGY and Your Church's Future”** with the Rev. Dr. Harold Senkbeil on Oct. 10. Find past webinars in our archive.

Register for one our Engaging Your Community (EYC) or Engaging the Wandering (ETW) events at lcms.org/rstm. These partner events offer practical resources and training in communication skills for reaching out to our wandering members and communities with Christ's love. Contact your district or our office if you are interested in holding an event near you.

The LCMS South Dakota District will partner with RSTM to hold two ETW

events, at St. John Lutheran Church, Groton, S.D., on Oct. 26, and Trinity Lutheran Church, Hartford, S.D., on Oct. 27. Online registration is available for these ETW events.

RSTM is also rolling out a new type of event, **Welcoming**, that we think you and your congregation are going to love and benefit from! We will address the little known “brain gain” of rural and small-town communities. These day-long events will help congregations to be more welcoming places that provide God's Word to both current members and guests. They are also great opportunities for leadership and volunteer training.

For more information about our events or to see the rest of our calendar, visit lcms.org/rstm or contact our office at 888-463-5127 or rstm@lcms.org.

